

OPTIONS AVAILABLE FOR EG3 LOCKBAR OPERATORS WITH CUSHIONLOKS

CUSHIONLOK MOUNTING TYPES:

- 1) FOOT STYLE
- 2) FOOT WITH WING
- 3) FLANGE MOUNTED
- 4) CUSTOM PER APPLICATION

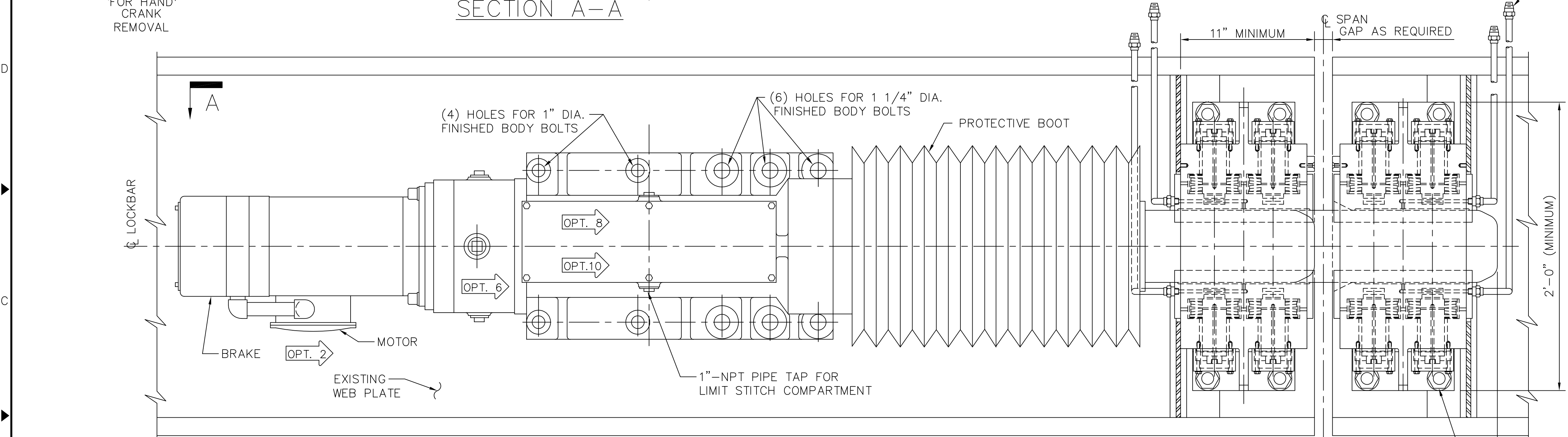
LOCKBAR SIZE / MINIMUM STROKE (BASED ON 1 1/2" GAP)	OPERATOR HOUSING STROKES
4" X 6" BAR / 14 1/2" STROKE	14 1/2"-28"
5" X 8" BAR / 17" STROKE	17"-28"
6" X 9" BAR / 18 1/2" STROKE	18 1/2"-28"
5" X 10" BAR / 17" STROKE	17"-28"
6" X 10" BAR / 18 1/2" STROKE	18 1/2"-28"

OPTIONS AVAILABLE FOR EG2B LOCKBAR OPERATORS WITH CUSTOM GUIDES/RECEIVERS

CUSTOM MOUNTING TYPES:

- 1) FOOT STYLE
- 2) FOOT WITH WING
- 3) FLANGE MOUNTED
- 4) CUSTOM PER APPLICATION

LOCKBAR SIZE / MINIMUM STROKE (BASED ON 1 1/2" GAP) (PER CUSTOMER'S REQUEST)	OPERATOR HOUSING STROKES
4" X 6" BAR / 9" STROKE (STD.)	9"-16"
(OTHER SIZES AS REQUIRED)	9"-16"



GENERAL NOTES

- 1) ALL COMPONENTS SHALL BE MATCH MARKED IN THE SHOP. MATCH MARKS SHALL REMAIN LEGIBLE AFTER MACHINING, PAINTING, AND SHIPMENT FOR PROPER ASSEMBLY IN FIELD. USE FILL PLATES AND SHIMS AS REQUIRED FOR PROPER ALIGNMENT OF MACHINERY.
- 2) ALL UNFINISHED STEEL SURFACES SHALL BE GIVEN ONE SHOP COAT OF PRIMER. THE PRIMER COAT SHALL BE A TWO COMPONENT, HIGH BUILD, MODIFIED ALUMINUM EPOXY MASTIC WITH A DRY FILM THICKNESS OF 5.0 TO 8.0 MILS. AN ACCEPTABLE PRODUCT IS CARBOMASTIC 15 LOW ODOR AS MFG. BY "CARBOLINE CO." COLOR TO BE ANSI "SAFETY BLUE"
- 3) ALL FINISHED SURFACES THAT SHOULD NOT BE PAINTED BUT DO REQUIRE PROTECTION SHALL BE COATED AS SOON AS PRACTICAL AFTER MACHINING WITH NO-OX-ID "A SPECIAL". MACHINERY PARTS MUST BE COMPLETELY PROTECTED FROM WEATHER, DIRT AND FOREIGN MATERIALS DURING MANUFACTURE AND BE STORED INDOORS WHILE AWAITING ERECTION. SHIMS SHALL BE COATED WITH NO-OX-ID "A" SPECIAL PRIOR TO SHIPMENT AND WIPED CLEAN BEFORE INSTALLATION.
- 4) IMMEDIATELY AFTER ERECTION AND BEFORE BRIDGE OPERATION, ALL ROTATING AND SLIDING PARTS SHALL BE LUBRICATED AND ALL GEAR HOUSINGS FILLED WITH THE LUBRICANTS SPECIFIED ON THE LUBRICATION CHARTS.
- 5) SEE DRAWING CLKP19-2 FOR SECTION B-B.

ELEVATION LOCKBAR OPERATOR
(QUANTITY AS REQUIRED)

OPTIONS AVAILABLE PER CUSTOMER REQUEST FOR EG2B / EG3 LOCKBAR OPERATORS

- | | |
|---|--|
| <p>MOTOR/BRAKE SIZE:</p> <ol style="list-style-type: none"> 1) 1 1/2 HP / 6 FT/LB 2) 5 HP / 15 FT/LB | <p>OPERATOR HOUSING POSITIONS:</p> <ol style="list-style-type: none"> 1) VERTICAL OR HORIZONTAL AS REQUIRED |
| <p>MOTOR HOUSING:</p> <ol style="list-style-type: none"> 1) ROTATED AS REQ'D IN 90° INCREMENTS (FOR ELECTRICAL BOX) | <p>REDUCER HOUSING:</p> <ol style="list-style-type: none"> 1) ROTATED AS REQ'D IN 45° INCREMENTS (FOR CLEARANCE) |
| <p>MOTOR:</p> <ol style="list-style-type: none"> 1) STRIP HEATER | |
| <p>EMERGENCY OPERATION:</p> <ol style="list-style-type: none"> 1) REMOVABLE HAND CRANK 2) REMOVABLE HAND WHEEL ADAPTER (MOTOR REMOVED) 3) USED WITH AIR MOTOR OR HAND CRANK/WHEEL | |

ANY NOVEL FEATURES OR TECHNIQUES INITIATED OR DEVELOPED BY OR FOR US RELATED TO THE SUBJECT OF THIS DRAWING ARE OUR EXCLUSIVE PROPERTY EXCEPT AS OTHERWISE PROVIDED BY EXPRESS AGREEMENT. THIS PRINT IS NOT FOR GENERAL CIRCULATION OR FOR PRODUCTION USE, NOR IS IT TO BE COPIED OR DUPLICATED IN WHOLE OR IN PART, WITHOUT OUR SPECIFIC AUTHORIZATION. EARLE CUSHIONLOKS® SYSTEM IS PROTECTED UNDER U.S. PATENT NO. 5,327,605.

MACHINING TOLERANCES UNLESS OTHERWISE SPECIFIED

DECIMAL: .X ±.060" .XX ±.030" .XXX ±.010"

FRACTIONAL: ±1/16" ±1/2"

ANGLES: ±1/2"

REV.	DATE	DESCRIPTION	ZONE	BY

CUSTOMER: ---
LOCATION: ---
DRAWN: J. GILMORE SCALE: NONE
CHECKED: SMC DATE: ---
JOB NO. PROPOSAL DWG. NO. CLKP19-1

PROPOSAL OF CUSHIONLOKS® SPAN LOCK SYSTEM



SUBJECT: SPAN LOCK PROPOSAL
DETAILS: CUSHIONLOKS® ARRANGEMENT

